



RESIDENTIAL AIR CONDITIONERS STANDARD INVERTER (PU)



OUTDOOR



CU-RU9AKH



CU-RU12AKH



CU-RU18AKH-B
CU-RU24AKH



STANDARD INVERTER

INVERTER

AI ECO

POWERFUL



Comfort Cloud App
(Optional Network Adaptor)

QUALITY AIR FOR LIFE

EFFICIENCY

Inverter Technology

Inverter technology minimises temperature fluctuation to save energy, provide better comfort and quiet operation.



*1 52% energy saving result only applicable to 2.5HP STANDARD INVERTER. Comparison with lowest 2-star product.



ECO Mode with A.I Control

ECO mode with A.I Control intelligently learns and judges based on room condition and heat source to optimise energy savings and comfort level.



*2 Comparison of ECO mode & normal mode by using 1.5HP Inverter model.

DURABILITY

Durable Outdoor Units

Panasonic's outdoor units are equipped with Blue Fin and Copper Tube condenser, a corrosion resistant outdoor coating, plus water resistant printed circuit board for protection against corrosion and different conditions.



BLUE FIN CONDENSER

COPPER TUBE CONDENSER

Benefits of Panasonic Inverter vs Non-Inverter



Save On Electricity Bill
Precisely control the temperature for better efficiency and optimum performance.



Better Comfort
Varying the speed of compressor to optimise cooling while saving energy.



Quiet Operation
Smooth operation and noise level as low as **19dB(A)***3.
*3 19dB(A) noise level only applicable to 1.0HP STANDARD INVERTER.

COMFORT

POWERFUL

Up to 18%*4 Faster Cooling

POWERFUL mode cools your room faster by 18%*4 during start-up to bring you cooling comfort instantly on a hot day.

** Comparison of POWERFUL mode & normal cool mode by using 1.5HP Inverter model.



BIG FLAP

Big bottom flap directs cool air across the room.



** Applicable to CS-PU9AKH-1 & CS-PU12AKH-1

AEROWINGS

AEROWINGS concentrates cool air for further and faster airflow across the room using 2 flaps.



** Applicable to CS-PU18AKH-1 & CS-PU24AKH-1

CONNECTIVITY

Control AC Anywhere

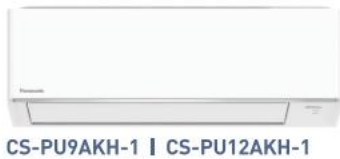
With an optional network adaptor (CZ-TACG1) connected to Panasonic Comfort Cloud App, remotely control and monitor all air conditioning units anytime, anywhere.



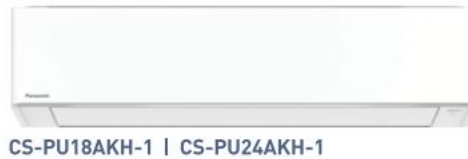
Network Adaptor CZ-TACG1 (Required)



STANDARD INVERTER Single-Split Type



CS-PU9AKH-1 | CS-PU12AKH-1



CS-PU18AKH-1 | CS-PU24AKH-1



Wireless (Standard) | Wired CZ-R0514C (Optional) | Network Adaptor CZ-TACG1 (Optional)



MODEL	INDOOR UNIT	OUTDOOR UNIT	(50Hz)	CS-PU9AKH-1 CU-RU9AKH	CS-PU12AKH-1 CU-RU12AKH	CS-PU18AKH-1 CU-RU18AKH-B	CS-PU24AKH-1 CU-RU24AKH
Cooling Capacity	(min-max)		kW	2.65 (0.90-3.40)	3.52 (1.02-4.10)	5.30 (1.10-6.00)	6.25 (1.12-7.18)
	(min-max)		Btu/h	9,040 (3,070-11,600)	12,000 (3,480-14,000)	18,100 (3,750-20,500)	21,300 (3,820-24,500)
EER	(min-max)		Btu/h·W	12.05 (13.44-11.26)	11.65 (12.65-11.11)	11.24 (12.93-11.20)	11.83 (15.28-11.78)
	(min-max)		W/W	3.53 (4.00-3.30)	3.42 (3.71-3.25)	3.29 (3.79-3.28)	3.47 (4.48-3.45)
CSPF			W/W	5.57 (5★)	5.41 (5★)	5.91 (5★)	5.99 (5★)
	Voltage		V	220-240	220-240	220-240	220-240
Electrical Data	Current		A	3.70-3.40	4.80-4.40	7.40-6.80	8.30-7.60
	Power Input (min-max)		W	750 (225-1,030)	1,030 (275-1,260)	1,610 (290-1,830)	1,800 (250-2,080)
Moisture Removal			L/h	1.6	2.0	2.9	3.5
			Pt/h	3.4	4.2	6.1	7.4
Air Circulation	Indoor		m ² /min [ft ² /min]	10.3 [365]	11.0 [390]	19.3 [680]	19.9 [700]
	Outdoor		m ² /min [ft ² /min]	26.7 [940]	30.6 [1,080]	39.3 [1,390]	34.9 [1,230]
Noise Level	Indoor (H : L : Q-Lo)		dB [A]	38;26;19	40;26;21	44;32;27	45;34;29
	Outdoor (H)		dB [A]	47	48	50	51
Dimensions Indoor (Outdoor)	Height		mm	290 (511)	290 (542)	295 (619)	295 (619)
			inch	11-7/16 (20-1/8)	11-7/16 (21-11/32)	11-5/8 (24-3/8)	11-5/8 (24-3/8)
	Width		mm	765 (650)	765 (780)	1,060 (824)	1,060 (824)
			inch	30-1/8 (25-19/32)	30-1/8 (30-23/32)	41-3/4 (32-15/32)	41-3/4 (32-15/32)
Net Weight	Indoor		kg [lb]	8 [18]	8 [18]	12 [26]	12 [26]
	Outdoor		kg [lb]	18 [40]	22 [49]	29 [64]	32 [71]
Refrigerant Pipe Diameter	Liquid Side		mm	ø 6.35	ø 6.35	ø 6.35	ø 6.35
			inch	1/4	1/4	1/4	1/4
Pipe Extension	Gas Side		mm	ø 9.52	ø 9.52	ø 12.70	ø 12.70
			inch	3/8	3/8	1/2	1/2
Pipe Extension	Chargeless Pipe Length		m	7.5	7.5	10.0	10.0
	Maximum Pipe Length		m	20	20	30	30
	Maximum Elevation Length		m	15	15	20	20
Power Supply	Additional Refrigerant Gas*		g/m	10	10	15	15
				Indoor	Indoor	Indoor	Indoor

*When pipes are not extended from the chargeless pipe length, the required amount of refrigerant is already in the unit.

- Please read the Installation Instructions carefully before installing the unit, and the Operating Instructions before using it.
- Specifications are subject to change without prior notice.
- The contents of this catalogue are accurate as of March 2024.
- Due to printing considerations, actual colours may vary slightly from those shown.
- All graphics are provided solely for the purpose of illustrating a point.

Do not add or replace refrigerant other than the specified type. Manufacturer is not responsible for damage or deterioration in safety due to usage of other refrigerant.

Authorised Dealer